



Coffee Brief

Date: 7/06/2025

Preparedness Levels & Alaska Fire Activity

National 3

Alaska 5 Light Initial Attack Activity - New Fires and Acres: 10 new fires for 1.1 acres / Large Fire Growth: ~ ~48,942 acres

Sources: National and AICC Situation Dashboard

Prioritized Incident Details

ALASKA MAC GROUP PRIORITIES – DECISION 7/5/2025	
1. Initial Attack	
2. #903 - Nenana Ridge CPX (IMT3 GFC 3), FAS	
3. #223 - Himalaya Road (CIMT SW 3), FAS	
4.#237 - Bear Creek (CIMT AK 1), FAS	
5.#218 – <u>Ninetyeight</u> (T3), MID	
6. #199 – Lush/ #225 Elephant (T3 Ad-hoc), TAD	
7. #901 - Ptarmigan Complex (T3 Ad-hoc), UYD	
8. #902 – <u>Roundabout Complex</u> (IMT3 SW NNMZ), GAD	
9. #222 - 7 Mile Lookout (IMT3 SA Gray), TAS	
10. #220 – Twelvemile Lake (IMT3 ID 1), DAS	
11. #226 - Nelchina Glacier (T3), CRS	

Source: AMAC Incident Prioritization List, ICS-209s

Resources

- Pending Crew Orders

Current Pending	Count of Request Name
CR1I - Crew, Type 1 or 2 IA	3
CR2I - Crew, Type 2 IA	8
CRW1 - Crew, Type 1	1
CRWA – Crew, Type Any	1
Grand Total	14

Resources within the GACC *(Tactical and Committed to Incidents)*

Resources	
Smoke Jumpers	~29
LAT's	4
Scoopers	6
Single Engine Scoopers	8
AA / ASM	4
T1 Helicopter	1
T2 Helicopter	12
T3 Helicopter	18
T1 Crews	16
T2IA Crews	14
T2 Crews (Agency / Contract)	13
Suppression Module	14
Wildland Fire Module	3

Source: IROC Reports

Weather Summary

High pressure over northern Alaska will bring the hot and dry weather to the Interior again today. North of the Alaska Range, expect highs in the 80s, with RHs into the mid to lower 20 percent range and a few teens as well. South Central, inland Southwest, and Copper River will top out in the mid-70s and RHs will drop into the low 30 percent range in parts of the Copper and Susitna drainages. Winds are expected to decrease today, but to also change direction to be mainly westerly.

In southern Alaska, temperatures and RHs become more moderate as a low moves into the Gulf of Alaska. This low will also break down the ridge leading to increased thunderstorm coverage today and tomorrow.

The pattern in the medium range continues as low-pressure systems from the northern Pacific and from the Arctic breakdown the high pressure that has dominated this past week. The result will be cooler temperatures in the Interior by tomorrow, with the northeastern Interior remaining the hottest (in the low 80s) until Wednesday. Precipitation will be more active but still spotty and spread from the southwest to the northeast. Overall, it should be a welcome reprieve after a week of active fire weather, but at best, this is just that, only a reprieve in this busy fire season.

Source: Alaska 7-Day Outlook

Fuels/Fire Potential

While conditions are improving in southern Alaska today, the Interior still has one more day of hot and dry weather. This will lend to another very active day for fire ignition and spread potential. Surface fuels are extremely dry, and upper and mid duff layers in the central Interior are pushing into Very High levels of concern on a broader footprint. ISIs are in the Very High category, indicating large fire growth is likely with crowning and rates of spread over 1 mph.

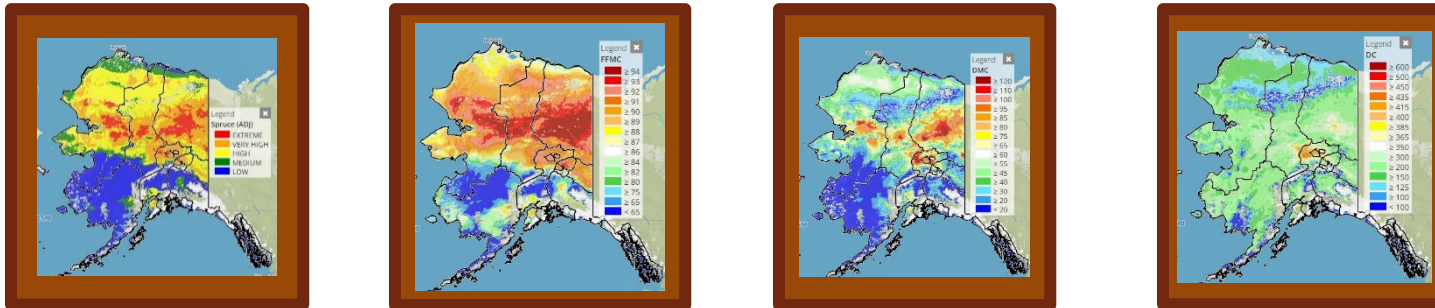
There is high likelihood for new starts today and tomorrow as scattered to numerous thunderstorms pop up in the Southern and Western Interior today, and in the Central Interior tomorrow. A Red Flag Warning for Lightning is in place tomorrow for the Kobuk and Koyukuk Valleys to the Central Brooks Range. Thunderstorms will also produce outflow which could cause erratic fire behavior.

Vapor pressure deficits are extreme, leading to increased stress on vegetation and accelerated drying with BUI values increasing by as much as 6-7 points per day. In much of the central and northeastern Interior, the deeper duff layers are also ready to engage, bringing the entire fuel column into play.

With the holiday weekend, human ignitions are a bigger concern. Though firework sales and campfires have been restricted in many areas, there is still plenty of opportunity for human ignitions, particularly along the road corridors and population centers, to cause an additional drain on resources.

Source: Alaska 7-Day Outlook

Fuels Status [Alaska Fire and Fuels Map](#)




For additional fuels information visit <https://akff.mesowest.org/>

Sources: AICC Predictive Services – Fuels/Fire Danger web page, Alaska Fire & Fuels web page

Notable from around the State and additional links for information

Link to the Risk Management Assistance Dashboard Intel Matrix for AK is now available at <https://arcg.is/10DD43>

Links to SharePoint IMT/Crew Tracking Spreadsheets:

Crew Glidepath -  [2025 Crew Tracking Report.xlsx](#)

IMT Assignments -  [AICC IMT Tracking Report - ConditionalFormatting_updatedv3.xlsx](#)

The Coffee Brief is posted at PLs 4 and 5 only.

